



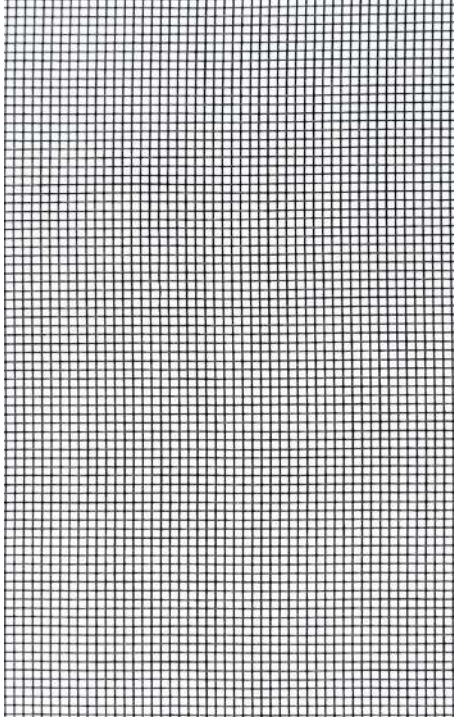
Insect screens Insektenschutz

Farbkarte
Colour chart

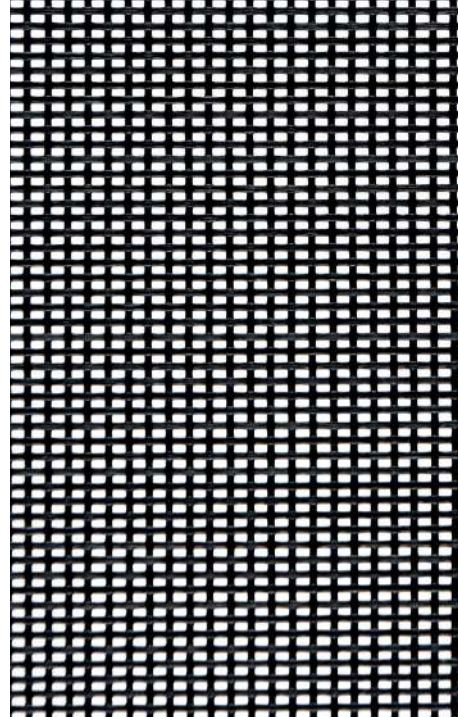
*Gültig ab 01. Februar 2014
Valid from 01 February 2014*

Insect screens

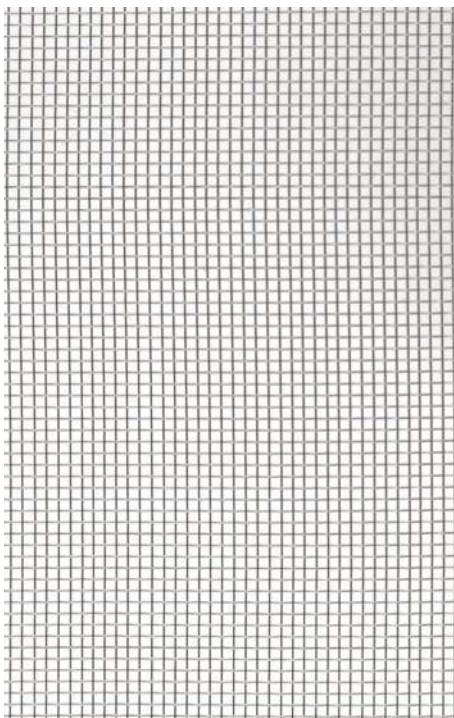
Colour chart



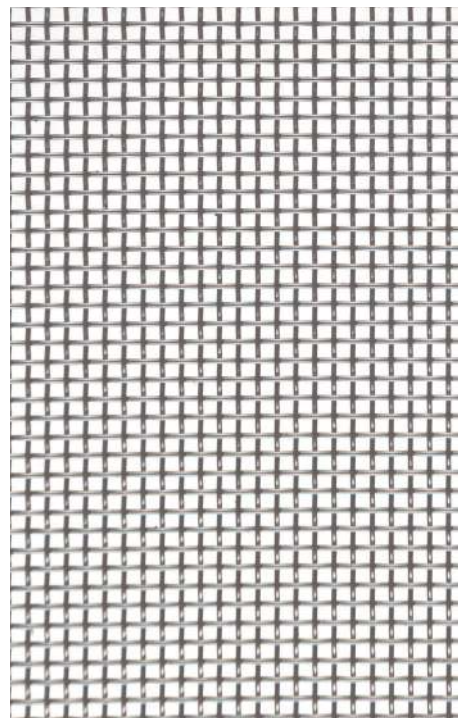
WAREMA VisionAir gauze
Design no. 47008



Design no. 47005



Design no. 47003



Design no. 47007

Insect screens

Colour chart

WAREMA VisionAir gauze

The black, highly transparent WAREMA VisionAir gauze ensures a brilliant view out as well as an outstanding air circulation. It is suitable for insect screen fixed, swivel, sliding frames as well as insect screen roller blinds. The gauze is made of a very fine and tear-resistant thread and is virtually invisible from the outside as well as inside. Available colour: black (design 47008)

Further insect screen gauzes

Hard-wearing and wear-resistant, vinyl-coated polyester fabric for use in special environments (e.g. pets). This gauze is resistant to weather and corrosion. We would like to point out that the use of this gauze restricts the view out and therefore we recommend to only use this curtain in the lower section of the frame. The two curtains are separated by a bar separating the fabric.

Available colour: black (design 47005)

For hard-wearing situations we offer a high-grade stainless steel gauze (A2) as an alternative (design 47003).

Grill for light well covers

The stainless steel grill (A2) for the light well cover is designed for very special requirements. It has a high resistance to mouse bite and is resistant to weather and corrosion (design 47007).

Fields of application

	Design	Material	Fixed frames	Swivel frame	Sliding frames	Roller blind	Light well covers
WAREMA VisionAir gauze black highly transparent	47008	Plastic-coated fibre glass	●	●	●	●	–
Insect screen gauze ¹⁾ black robust, recommended for small animal husbandry	47005	Plastic-coated polyester	●	●	●	–	–
Insect screen gauze ¹⁾ robust, recommended for small animal husbandry	47003	stainless steel (A2)	●	●	●	–	–
Grill for light well cover	47007	stainless steel (A2)	–	–	–	–	●

¹⁾ at a surcharge